

Nickinovich & Associates

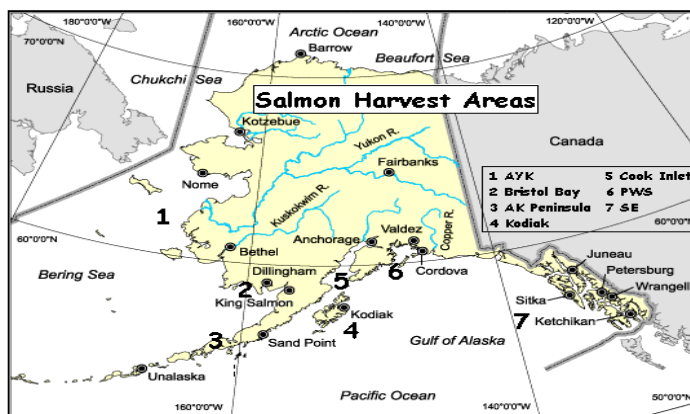
2021 Salmon Forecast & Harvest to Date Compared to 2020 Harvest

Catch as of:
28-Aug-21

(Shown in Thousands of Fish)

Fishing Regions	King		Red		Coho		Pink		Chum	
	2020 Actual	2021 F'cast	2020 Actual	2021 F'cast	2020 Actual	2021 F'cast	2020 Actual	2021 F'cast	2020 Actual	2021 F'cast
Arctic-Yukon-Kusko <i>Catch Totdate:</i>	6 <i>0</i>	1 <i>0</i>	145 <i>0</i>	2 <i>0</i>	55 <i>5</i>	100 <i>5</i>	13 <i>261</i>	50 <i>261</i>	200 <i>96</i>	570 <i>96</i>
Westward Region										
Kodiak <i>Catch Totdate:</i>	8 <i>8</i>	7 <i>8</i>	1,524 <i>2,924</i>	2,023 <i>2,924</i>	441 <i>154</i>	419 <i>154</i>	21,551 <i>21,686</i>	22,504 <i>21,686</i>	368 <i>391</i>	734 <i>391</i>
Chignik <i>Catch Totdate:</i>	0 <i>0</i>	6 <i>0</i>	0 <i>0</i>	165 <i>0</i>	0 <i>0</i>	114 <i>0</i>	0 <i>0</i>	2,657 <i>0</i>	0 <i>0</i>	177 <i>0</i>
S Peninsula/Aleutians <i>Catch Totdate:</i>	21 <i>10</i>	17 <i>10</i>	1,069 <i>3,921</i>	1,943 <i>3,921</i>	183 <i>278</i>	299 <i>278</i>	5,050 <i>10,842</i>	12,930 <i>10,842</i>	913 <i>1,695</i>	1,090 <i>1,695</i>
North Peninsula <i>Catch Totdate:</i>	1 <i>2</i>	2 <i>2</i>	1,780 <i>2,796</i>	2,789 <i>2,796</i>	48 <i>15</i>	55 <i>15</i>	30 <i>10</i>	143 <i>10</i>	56 <i>7</i>	124 <i>7</i>
Central Region										
Prince William Sound <i>Catch Totdate:</i>	7 <i>7</i>	8 <i>7</i>	942 <i>1,294</i>	2,060 <i>1,294</i>	289 <i>79</i>	516 <i>79</i>	23,004 <i>61,828</i>	54,857 <i>61,828</i>	2,017 <i>2,572</i>	2,262 <i>2,572</i>
Cook Inlet <i>Catch Totdate:</i>	4 <i>1</i>	6 <i>1</i>	877 <i>1,494</i>	2,152 <i>1,494</i>	143 <i>148</i>	226 <i>148</i>	2,861 <i>1,833</i>	2,771 <i>1,833</i>	43 <i>85</i>	161 <i>85</i>
Bristol Bay <i>Catch Totdate:</i>	10 <i>4</i>	31 <i>4</i>	39,580 <i>40,347</i>	34,560 <i>40,347</i>	114 <i>28</i>	137 <i>28</i>	72 <i>1</i>	9 <i>1</i>	293 <i>231</i>	1,169 <i>231</i>
Southeast Region <i>Catch Totdate:</i>	215 <i>174</i>	191 <i>174</i>	458 <i>951</i>	883 <i>951</i>	1,163 <i>822</i>	1,940 <i>822</i>	8,083 <i>40,029</i>	28,288 <i>40,029</i>	4,696 <i>4,196</i>	8,985 <i>4,196</i>
Total Alaska <i>Catch Totdate:</i>	272 <i>206</i>	269 <i>206</i>	46,375 <i>53,727</i>	46,577 <i>53,727</i>	2,437 <i>1,527</i>	3,807 <i>1,527</i>	60,665 <i>136,490</i>	124,210 <i>136,490</i>	8,587 <i>9,272</i>	15,272 <i>9,272</i>

Percent of 2020 Catch	76%	116%	63%	225%	108%
Percent of 2021 Forecast	77%	115%	40%	110%	61%

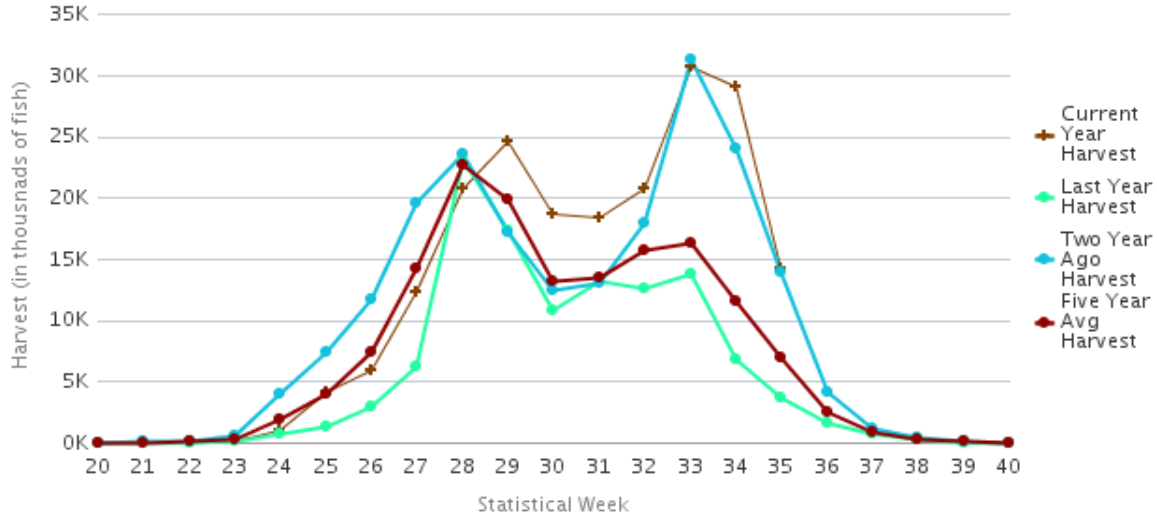


Source: ADF&G

Alaska Salmon Harvest Timing Graphs, Week 35, 28 August 2021

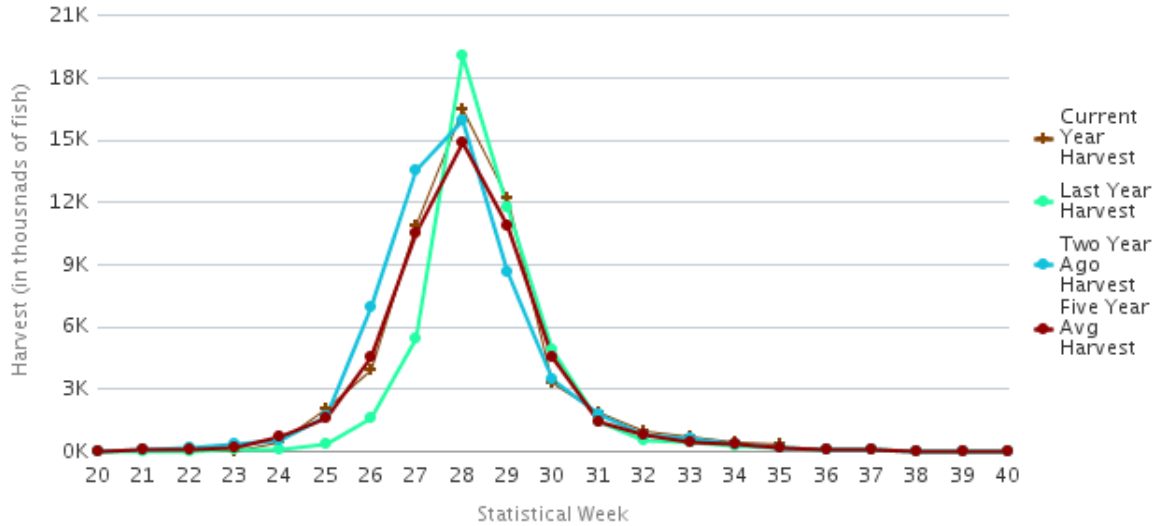
Inseason Timing Chart

All Alaska Salmon



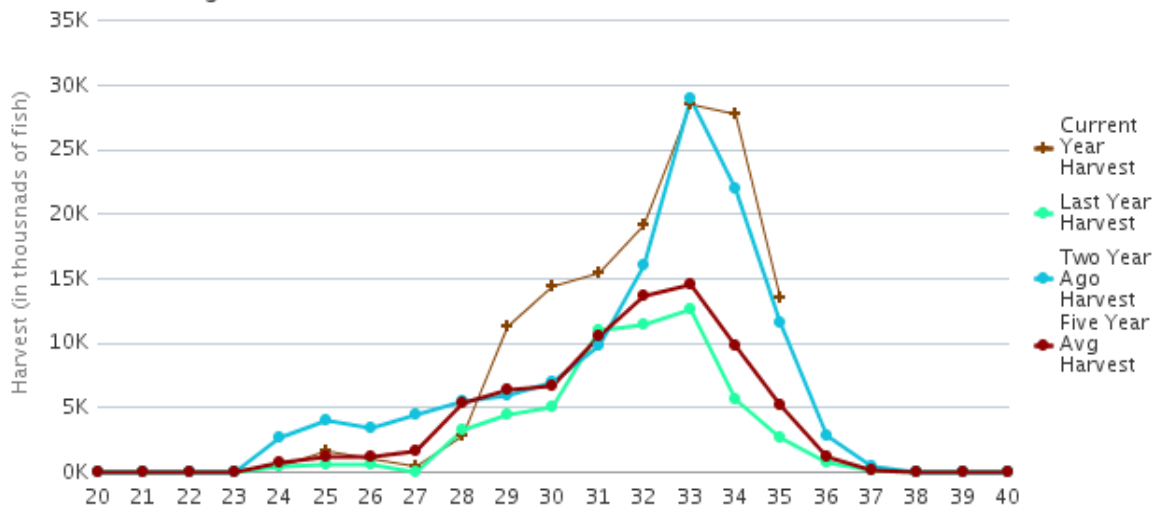
Inseason Timing Chart

Alaska Red Salmon



Inseason Timing Chart

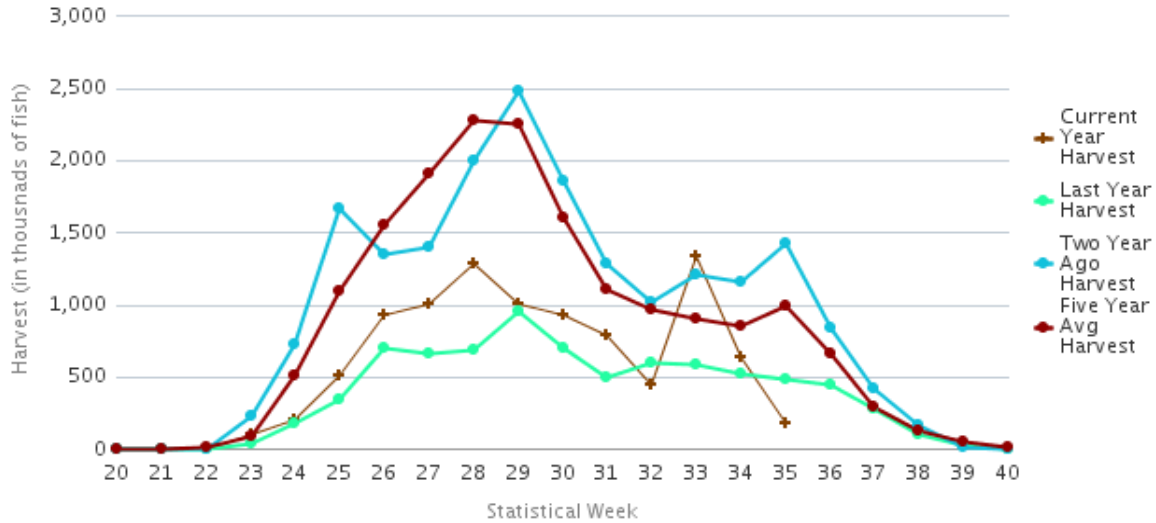
Alaska Pink Salmon



Alaska Salmon Harvest Timing Graphs, Week 35, 28 August 2021

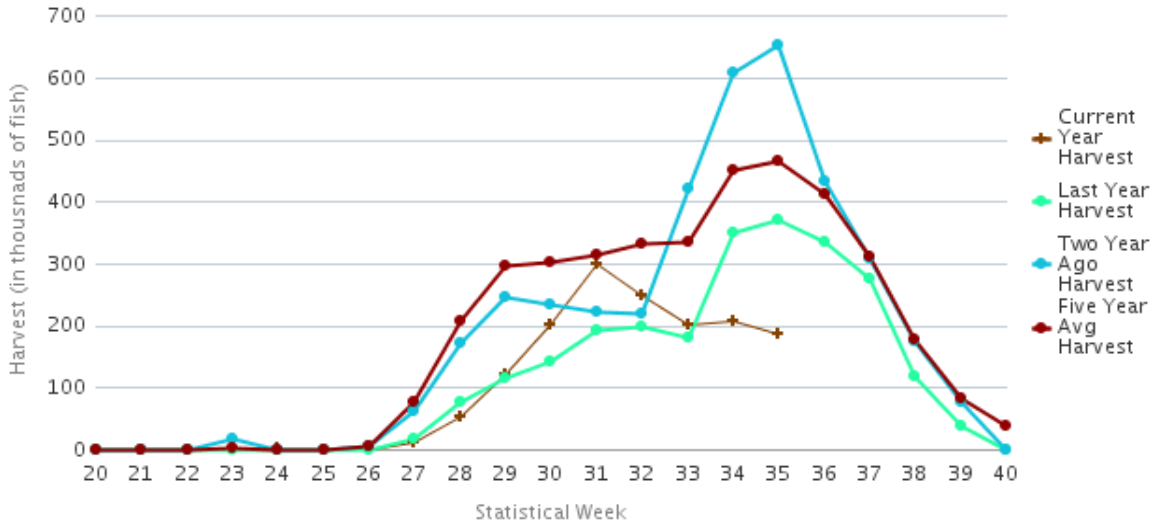
Inseason Timing Chart

Alaska Chum Salmon



Inseason Timing Chart

Alaska Coho Salmon



Inseason Timing Chart

Alaska King Salmon

