

Nickinovich & Associates

2020 Salmon Forecast & Harvest to Date Compared to 2019 Harvest

Catch as of:

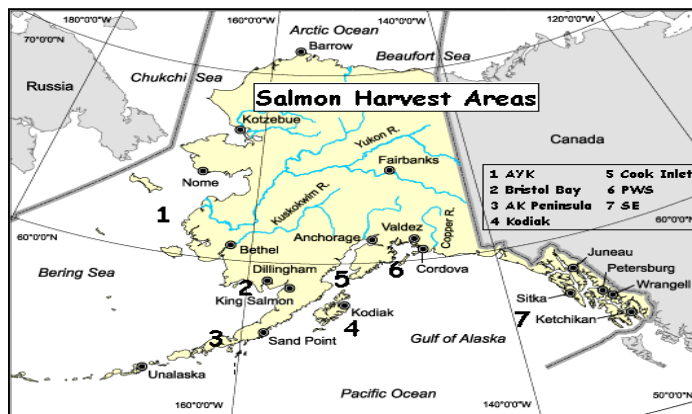
04-Jul-20

(Shown in Thousands of Fish)

Fishing Regions	King		Red		Coho		Pink		Chum	
	2019 Actual	2020 F'cast	2019 Actual	2020 F'cast	2019 Actual	2020 F'cast	2019 Actual	2020 F'cast	2019 Actual	2020 F'cast
Arctic-Yukon-Kusko <i>Catch Totdate:</i>	5	5 1	7	7 0	196	290 0	87	50 6	1,141	2,116 20
Westward Region										
Kodiak <i>Catch Totdate:</i>	8	7 1	2,179	1,812 57	396	438 0	33,119	12,200 8	549	810 98
Chignik <i>Catch Totdate:</i>	4	8 0	639	586 0	248	130 0	2,453	224 0	158	197 0
S Peninsula/Aleutians <i>Catch Totdate:</i>	22	23 3	1,631	2,374 311	523	317 0	20,790	450 1,644	1,338	1,080 452
North Peninsula <i>Catch Totdate:</i>	4	3 0	2,372	2,974 0	38	57 0	113	13 0	49	114 0
Central Region										
Prince William Sound <i>Catch Totdate:</i>	18	30 4	2,553	2,656 712	504	498 0	49,341	30,938 3	5,334	4,411 1,413
Cook Inlet <i>Catch Totdate:</i>	3	8 1	1,975	2,082 123	159	216 0	2,048	3,385 0	179	256 2
Bristol Bay <i>Catch Totdate:</i>	31	40 3	42,968	34,560 4,737	76	121 0	6	909 0	1,379	1,321 79
Southeast Region <i>Catch Totdate:</i>	177	197 39	878	1,098 4	1,652	2,140 1	21,106	12,382 14	8,417	9,174 95
Total Alaska <i>Catch Totdate:</i>	272	320 52	55,202	48,147 5,944	3,792	4,209 1	129,063	60,551 1,675	18,543	19,478 2,159

Percent of 2019 Catch
Percent of 2020 Forecast

19%	11%	0%	1%	12%
16%	12%	0%	3%	11%

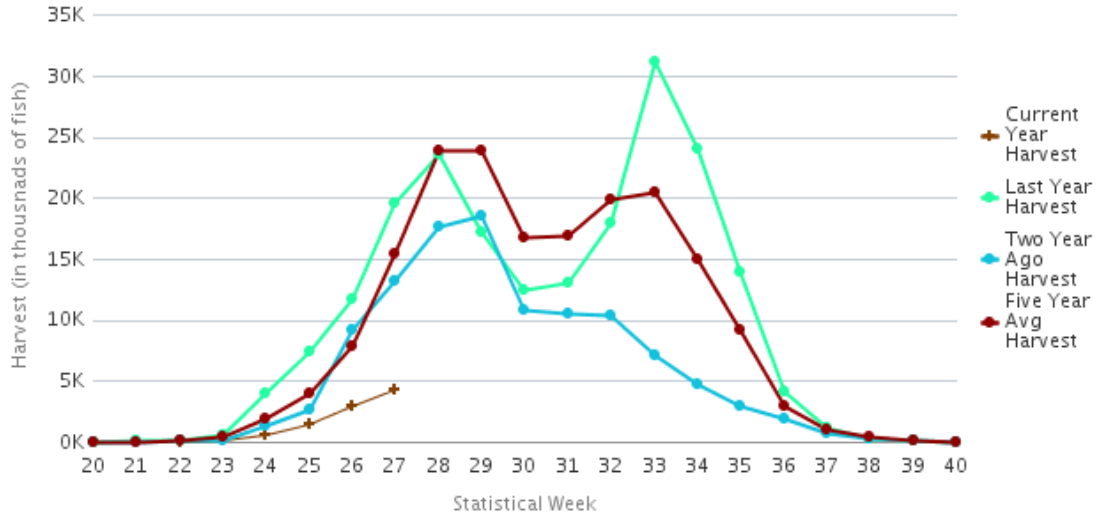


Source: ADF&G

Alaska Salmon Harvest Timing Graphs, Week 27, 04 July 20

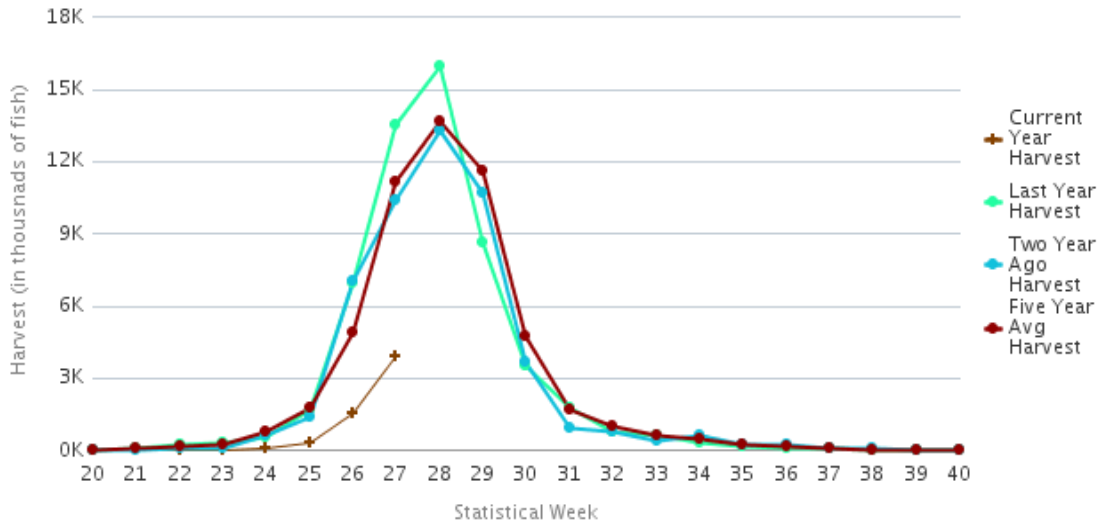
Inseason Timing Chart

All Alaska Salmon



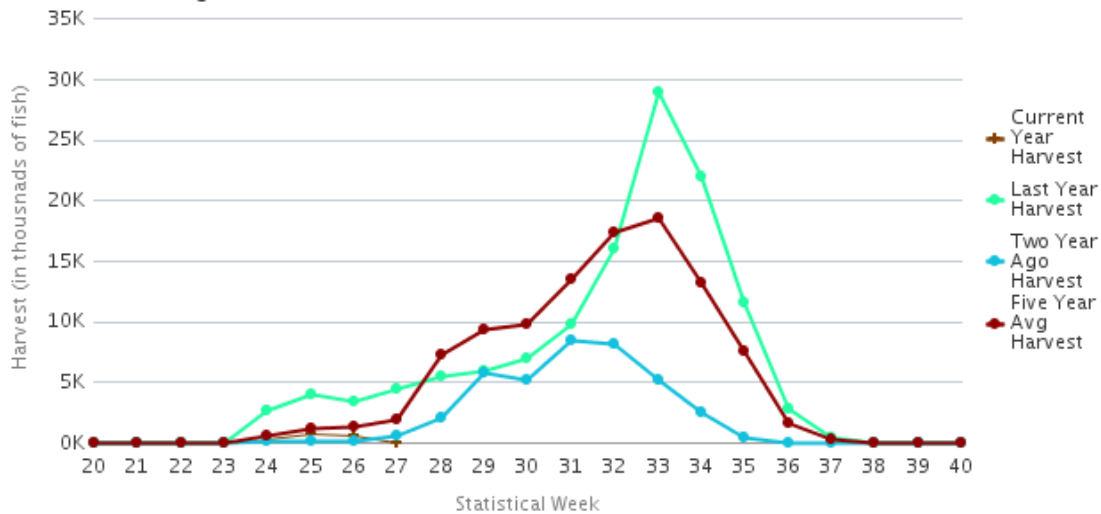
Inseason Timing Chart

Alaska Red Salmon



Inseason Timing Chart

Alaska Pink Salmon



Alaska Salmon Harvest Timing Graphs, Week 27, 04 July 2020

