

Nickinovich & Associates

2019 Salmon Forecast & Harvest to Date Compared to 2018 Harvest

Catch as of:

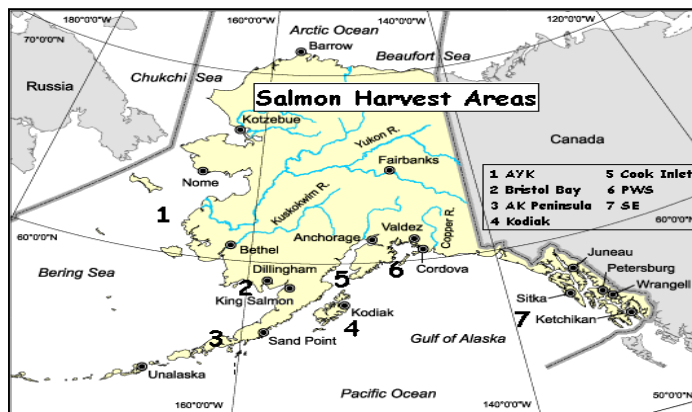
06-Jul-19

(Shown in Thousands of Fish)

Fishing Regions	King		Red		Coho		Pink		Chum	
	2018	2019	2018	2019	2018	2019	2018	2019	2018	2019
	Actual	F'cast	Actual	F'cast	Actual	F'cast	Actual	F'cast	Actual	F'cast
Arctic-Yukon-Kusko <i>Catch Totdate:</i>	0	1	3	4	367	330	78	50	1,884	2,190
		0		0		0		14		98
Westward Region										
Kodiak <i>Catch Totdate:</i>	4	7	1,825	2,336	441	310	6,169	27,000	464	802
		3		232		1		480		51
Chignik <i>Catch Totdate:</i>	0	9	0	1,001	0	107	0	2,448	1	177
		0		0		0		0		0
S Peninsula/Aleutians <i>Catch Totdate:</i>	17	20	1,343	2,332	275	271	776	20,600	1,095	908
		10		622		3		8,411		525
North Peninsula <i>Catch Totdate:</i>	2	2	2,372	2,885	96	71	30	83	59	130
		3		725		0		2		1
Central Region										
Prince William Sound <i>Catch Totdate:</i>	8	28	1,302	2,533	509	600	23,937	64,796	3,438	2,783
		18		1,694		0		4,006		3,348
Cook Inlet <i>Catch Totdate:</i>	4	8	1,185	3,257	235	221	1,691	3,451	178	260
		1		307		1		13		2
Bristol Bay <i>Catch Totdate:</i>	42	37	41,253	26,110	139	163	219	8	1,868	1,142
		25		16,808		0		1		510
Southeast Region <i>Catch Totdate:</i>	158	152	602	1,229	1,555	2,555	7,762	19,395	11,165	20,571
		47		30		5		38		81
Total Alaska	235	264	49,885	41,686	3,615	4,628	40,662	137,830	20,153	28,962
<i>Catch Totdate:</i>		107		20,418		10		12,965		4,616

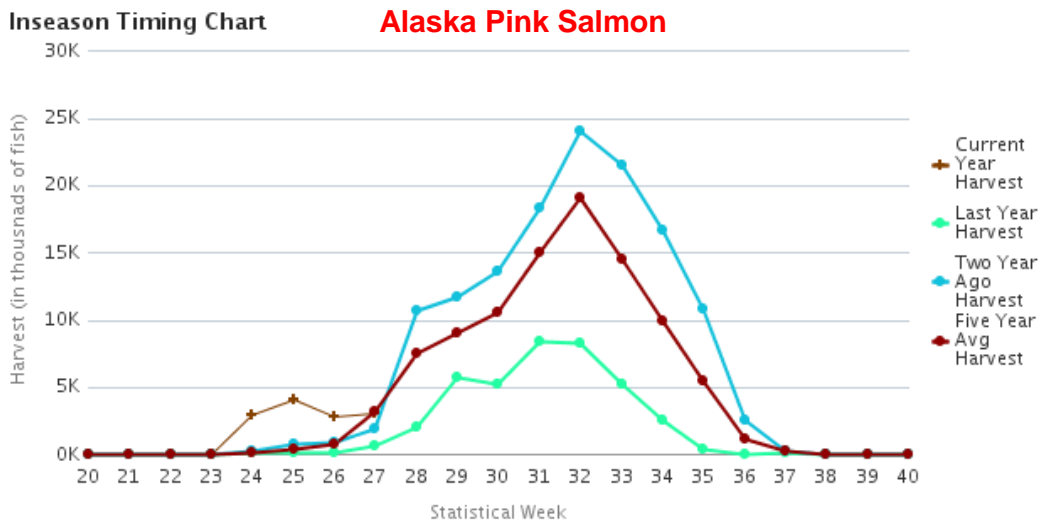
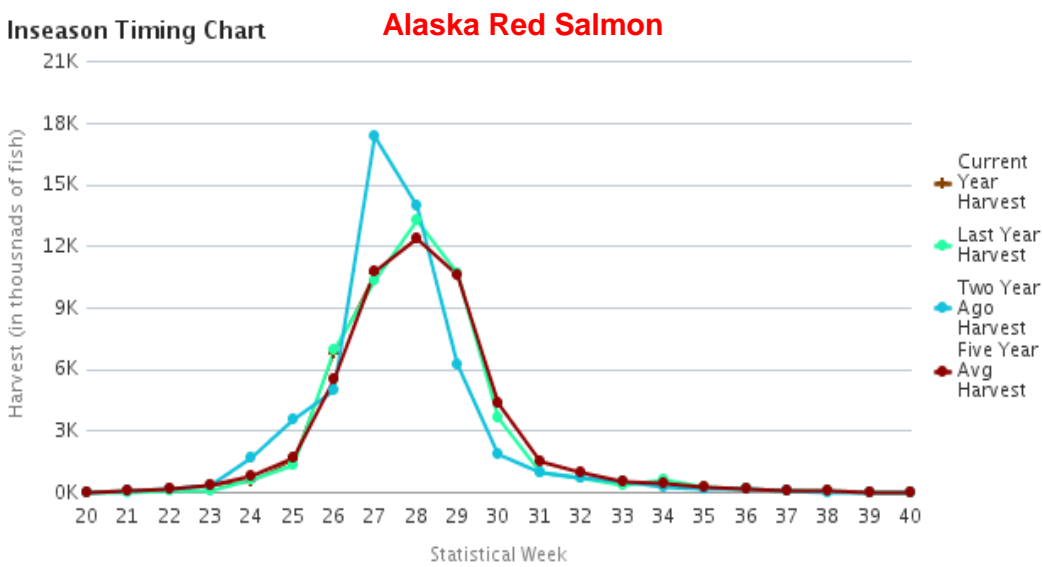
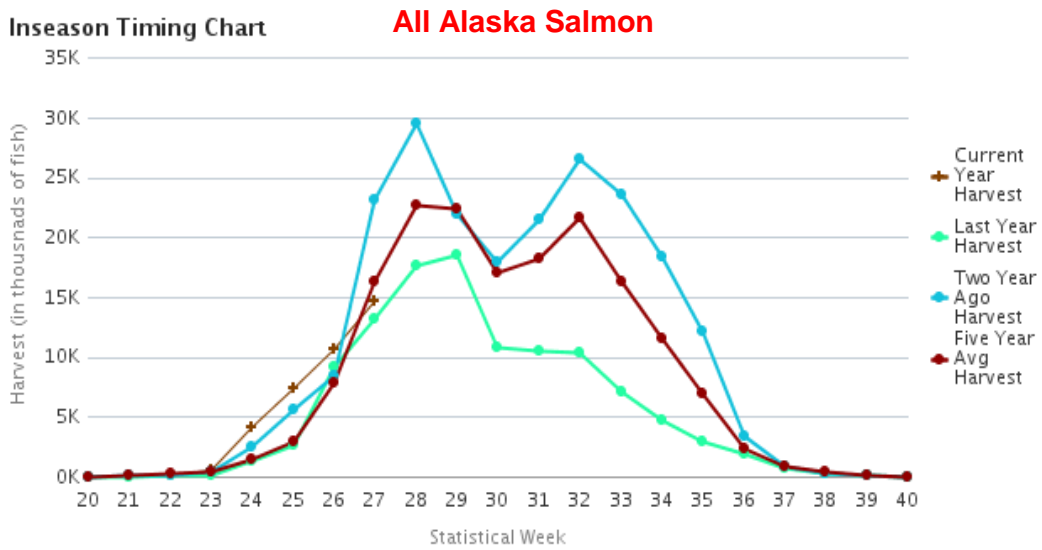
Percent of 2018 Catch
Percent of 2019 Forecast

46%	41%	0%	32%	23%
41%	49%	0%	9%	16%



Source: ADF&G

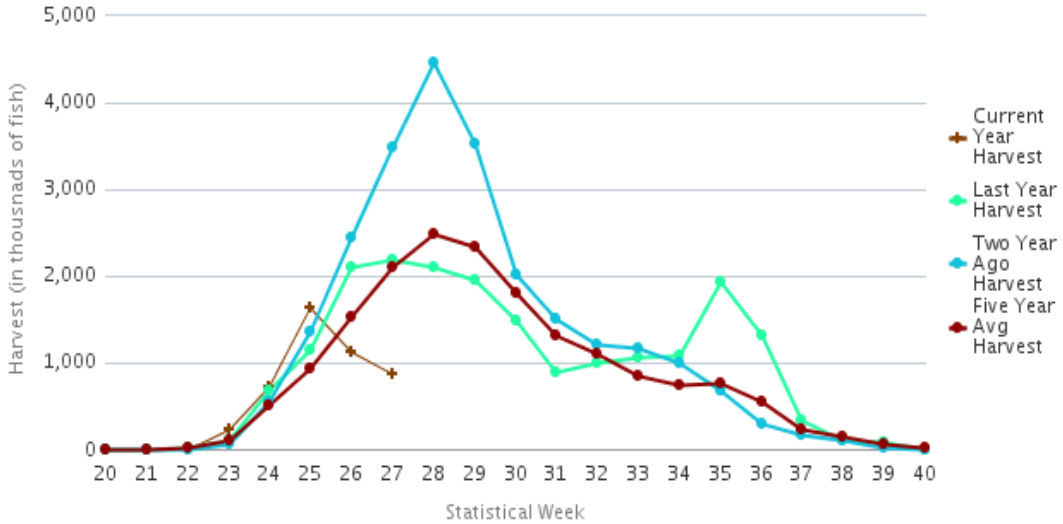
Alaska Salmon Harvest Timing Graphs, Week 27, 06 July 19



Alaska Salmon Harvest Timing Graphs, Week 27, 06 July 2019

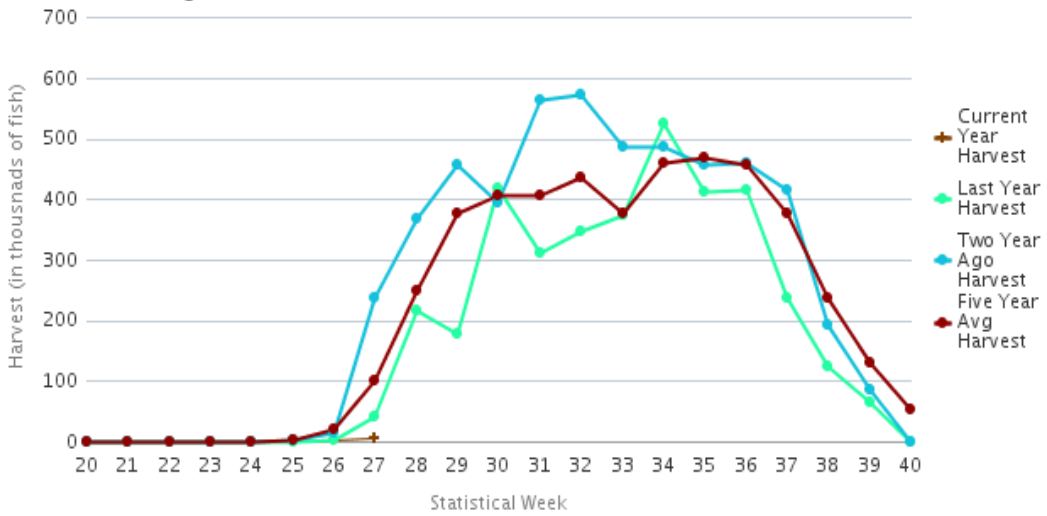
Inseason Timing Chart

Alaska Chum Salmon



Inseason Timing Chart

Alaska Coho Salmon



Inseason Timing Chart

Alaska King Salmon

