

Nickinovich & Associates

2019 Salmon Forecast & Harvest to Date Compared to 2018 Harvest

Catch as of:

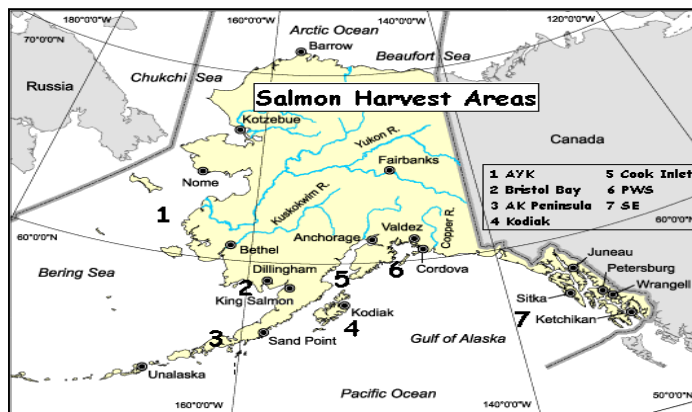
15-Jun-19

(Shown in Thousands of Fish)

Fishing Regions	King		Red		Coho		Pink		Chum	
	2018 Actual	2019 F'cast	2018 Actual	2019 F'cast	2018 Actual	2019 F'cast	2018 Actual	2019 F'cast	2018 Actual	2019 F'cast
Arctic-Yukon-Kusko <i>Catch Totdate:</i>	0	1 0	3	4 0	367	330 0	78	50 0	1,884	2,190 0
Westward Region										
Kodiak <i>Catch Totdate:</i>	4	7 1	1,825	2,336 18	441	310 0	6,169	27,000 12	464	802 2
Chignik <i>Catch Totdate:</i>	0	9 0	0	1,001 0	0	107 0	0	2,448 0	1	177 0
S Peninsula/Aleutians <i>Catch Totdate:</i>	17	20 1	1,343	2,332 198	275	271 0	776	20,600 2,429	1,095	908 66
North Peninsula <i>Catch Totdate:</i>	2	2 0	2,372	2,885 0	96	71 0	30	83 0	59	130 0
Central Region										
Prince William Sound <i>Catch Totdate:</i>	8	28 17	1,302	2,533 831	509	600 0	23,937	64,796 0	3,438	2,783 565
Cook Inlet <i>Catch Totdate:</i>	4	8 0	1,185	3,257 92	235	221 0	1,691	3,451 0	178	260 0
Bristol Bay <i>Catch Totdate:</i>	42	37 0	41,253	26,110 14	139	163 0	219	8 0	1,868	1,142 0
Southeast Region <i>Catch Totdate:</i>	158	152 18	602	1,229 0	1,555	2,555 0	7,762	19,395 0	11,165	20,571 0
Total Alaska	235	264	49,885	41,686	3,615	4,628	40,662	137,830	20,153	28,962
<i>Catch Totdate:</i>		37		1,153		0		2,441		633

Percent of 2018 Catch
Percent of 2019 Forecast

16%	2%	0%	6%	3%
14%	3%	0%	2%	2%

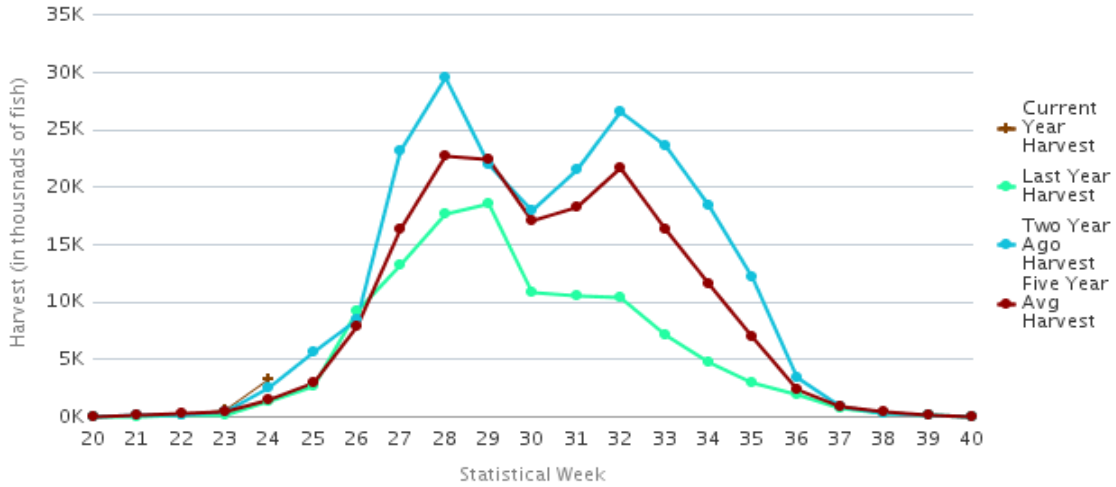


Source: ADF&G

Alaska Salmon Harvest Timing Graphs, Week 24, 15 June 19

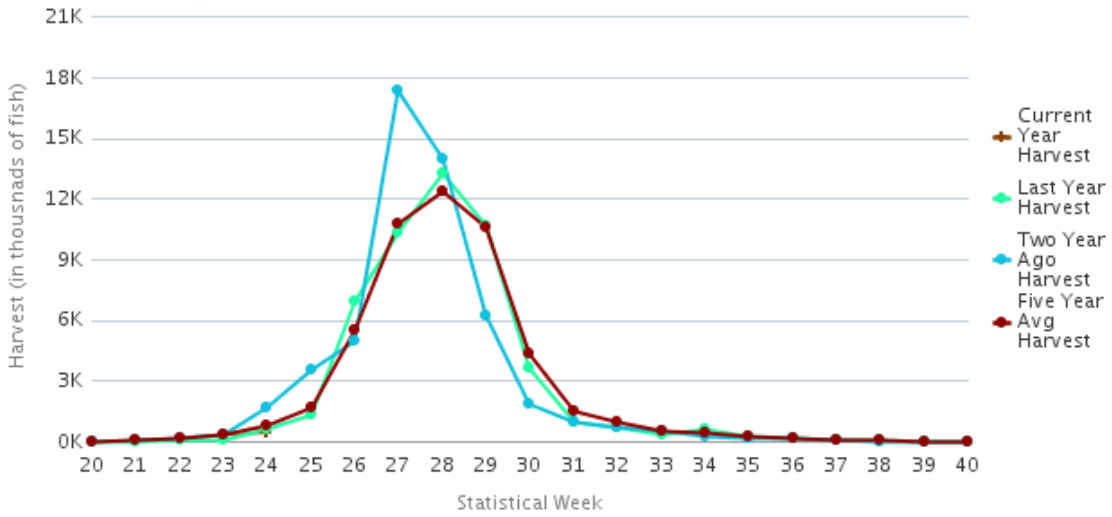
Inseason Timing Chart

All Alaska Salmon



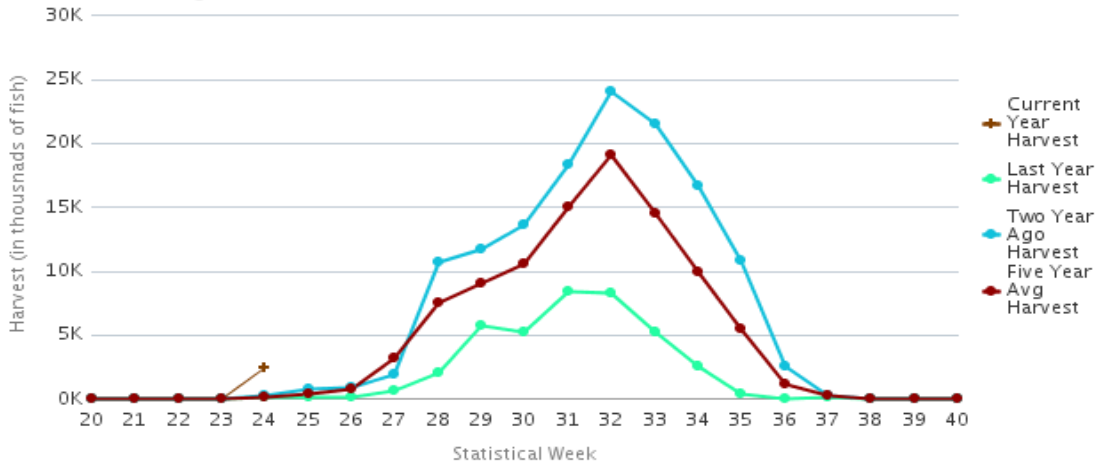
Inseason Timing Chart

Alaska Red Salmon



Inseason Timing Chart

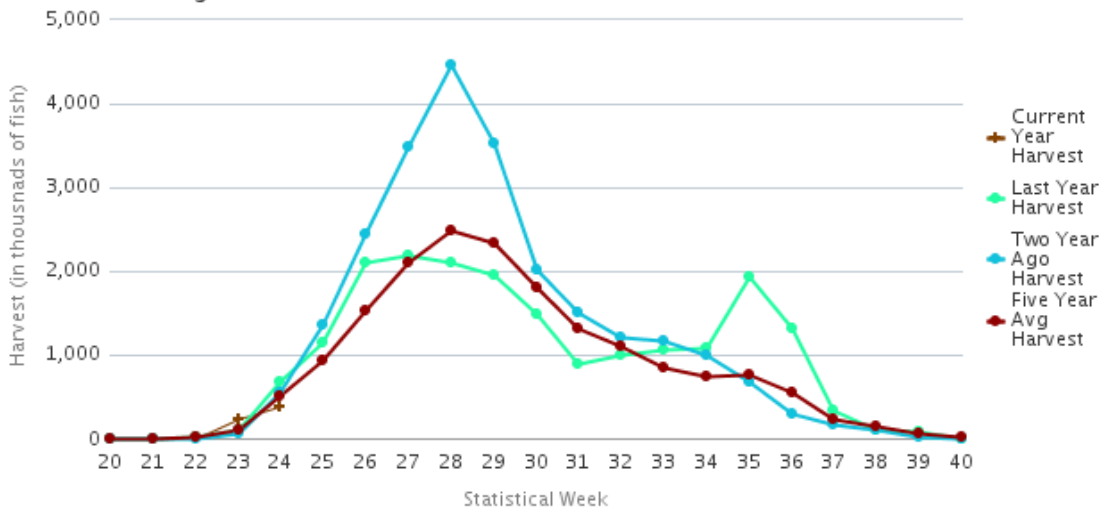
Alaska Pink Salmon



Alaska Salmon Harvest Timing Graphs, Week 24, 15 June 2019

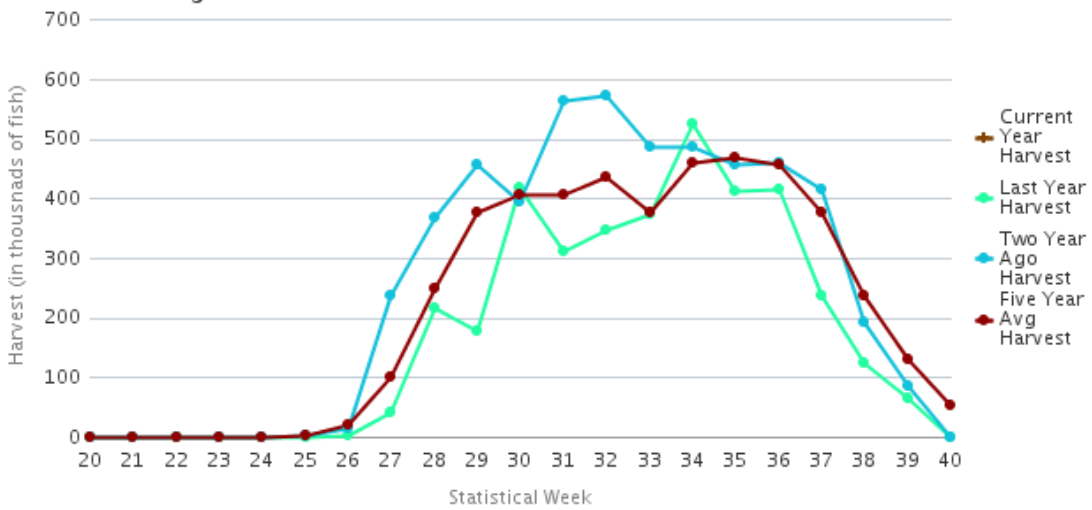
Inseason Timing Chart

Alaska Chum Salmon



Inseason Timing Chart

Alaska Coho Salmon



Inseason Timing Chart

Alaska King Salmon

