

# Nickinovich & Associates

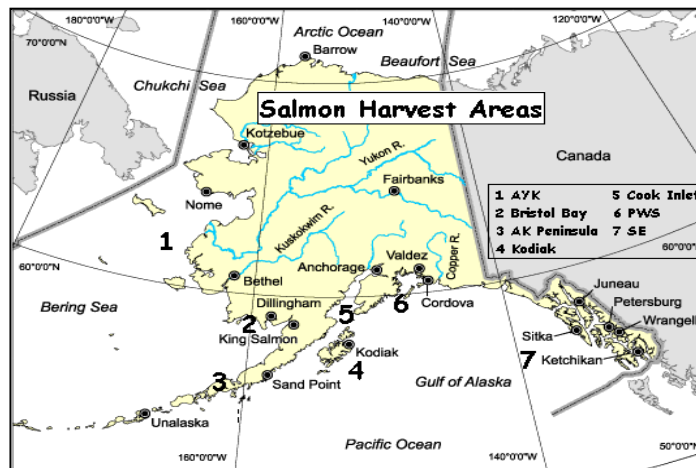
## 2016 Salmon Forecast & Harvest to Date Compared to 2015 Harvest

**Catch as of:**  
**27-Aug-16**

(Shown in Thousands of Fish)

Fishing Regions	King		Red		Coho		Pink		Chum	
	2015	2016	2015	2016	2015	2016	2015	2016	2015	2016
	Actual	F'cast	Actual	F'cast	Actual	F'cast	Actual	F'cast	Actual	F'cast
Arctic-Yukon-Kusko <b>Catch Totdate:</b>	9	2	61	94	433	365	69	575	1,025	1,480
Westward Region										
Kodiak <b>Catch Totdate:</b>	9	17	3,103	3,692	416	333	33,008	16,200	771	645
Chignik <b>Catch Totdate:</b>	10	6	1,541	1,767	83	71	1,979	849	102	150
S Peninsula/Aleutians <b>Catch Totdate:</b>	49	16	3,343	2,158	278	219	16,684	13,394	687	742
North Peninsula <b>Catch Totdate:</b>	3	1	2,590	1,421	44	50	10	28	179	206
Central Region										
Prince William Sound <b>Catch Totdate:</b>	24	21	3,210	3,397	197	266	98,254	23,439	2,543	3,100
Cook Inlet <b>Catch Totdate:</b>	11	7	2,840	4,412	217	162	6,397	866	381	250
Bristol Bay <b>Catch Totdate:</b>	53	29	35,672	29,520	31	118	3	796	930	762
Southeast Region <b>Catch Totdate:</b>	307	432	1,388	1,273	1,875	2,831	34,088	34,000	8,559	11,349
<b>Total Alaska</b> <b>Catch Totdate:</b>	474	531	53,748	47,733	3,574	4,415	190,492	90,146	15,177	18,683

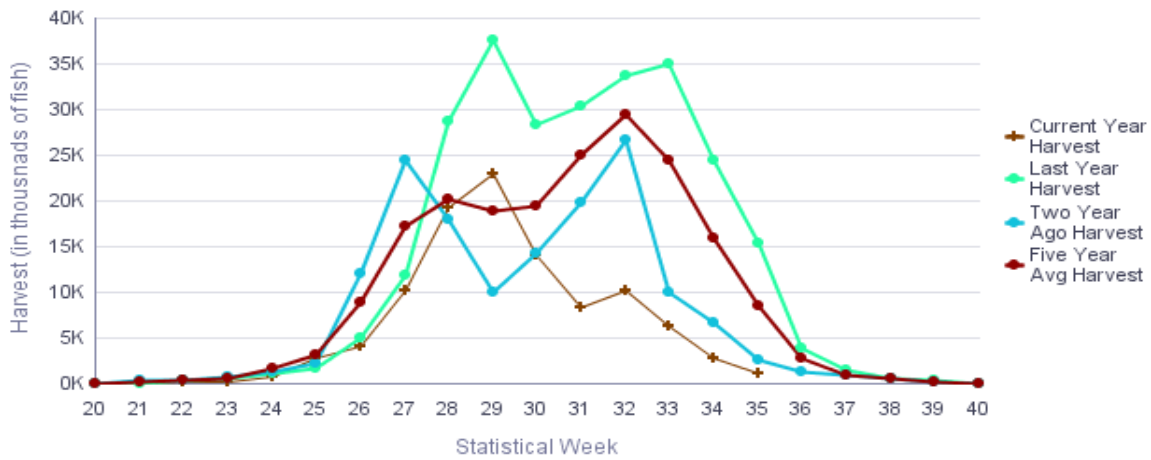
Percent of 2015 Catch	<b>78%</b>	<b>98%</b>	<b>68%</b>	<b>19%</b>	<b>85%</b>
Percent of 2016 Forecast	<b>70%</b>	<b>110%</b>	<b>55%</b>	<b>40%</b>	<b>69%</b>



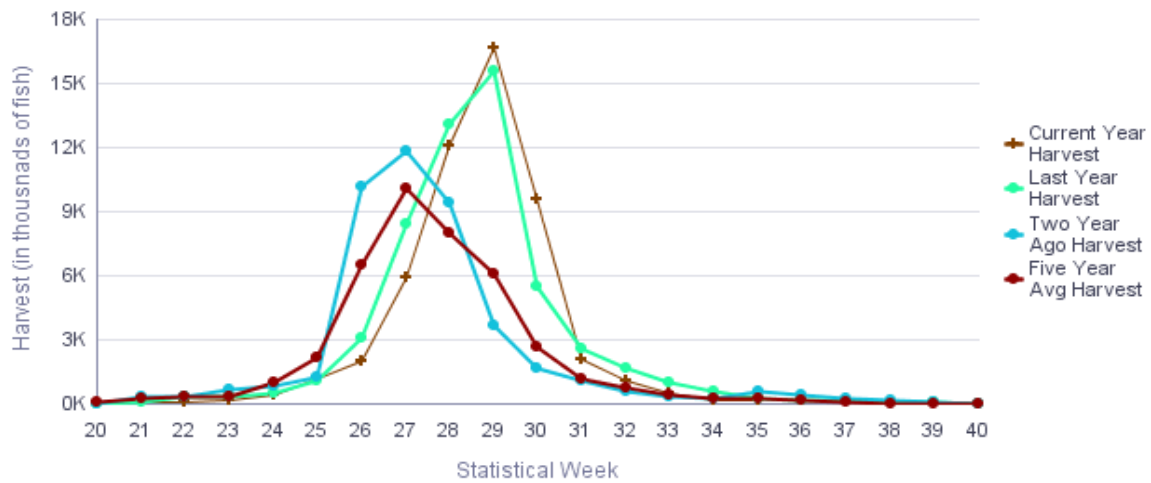
Source: ADF&G

# Alaska Salmon Harvest Timing Graphs, Week 35, 27 August 16

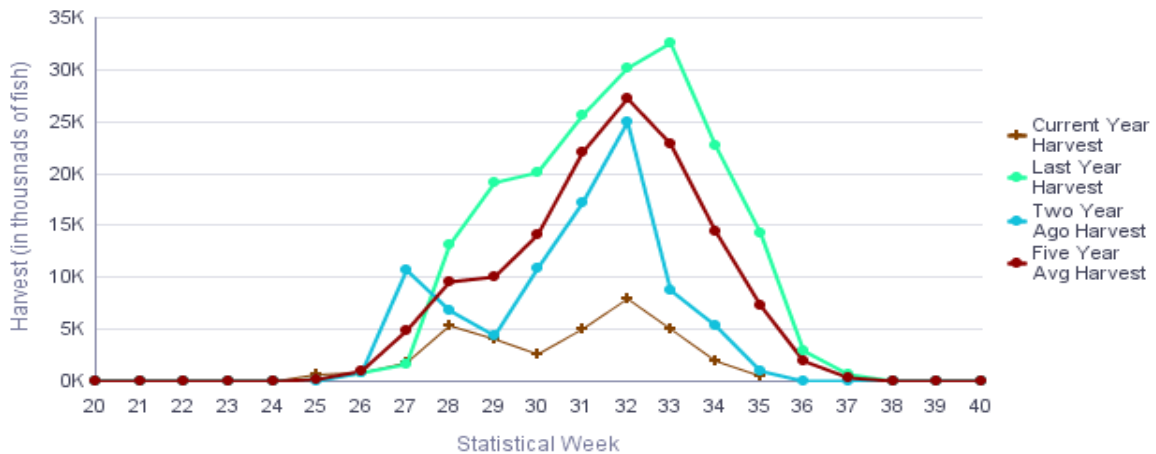
## All Alaska Salmon Inseason Timing Chart



## Alaska Red Salmon Inseason Timing Chart

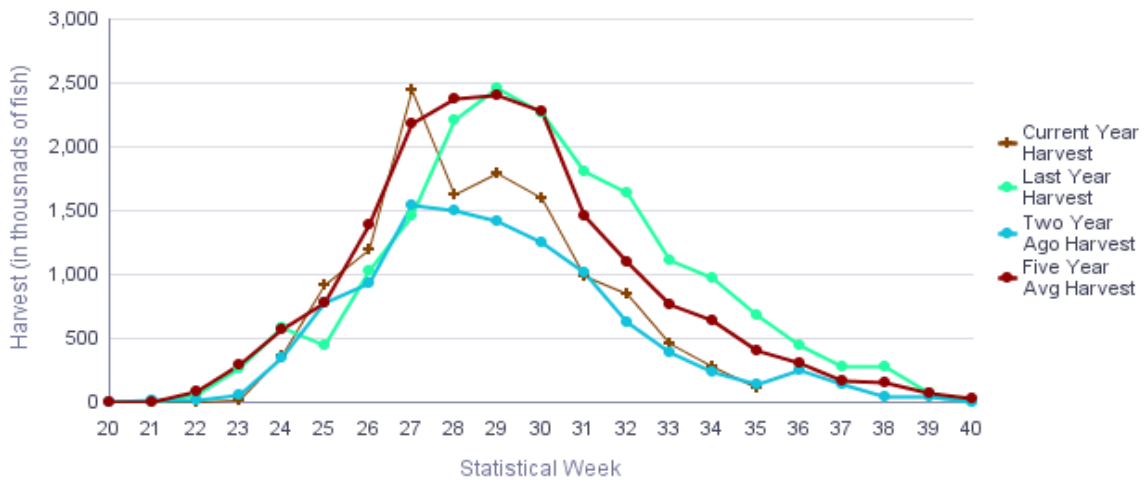


## Alaska Pink Salmon Inseason Timing Chart

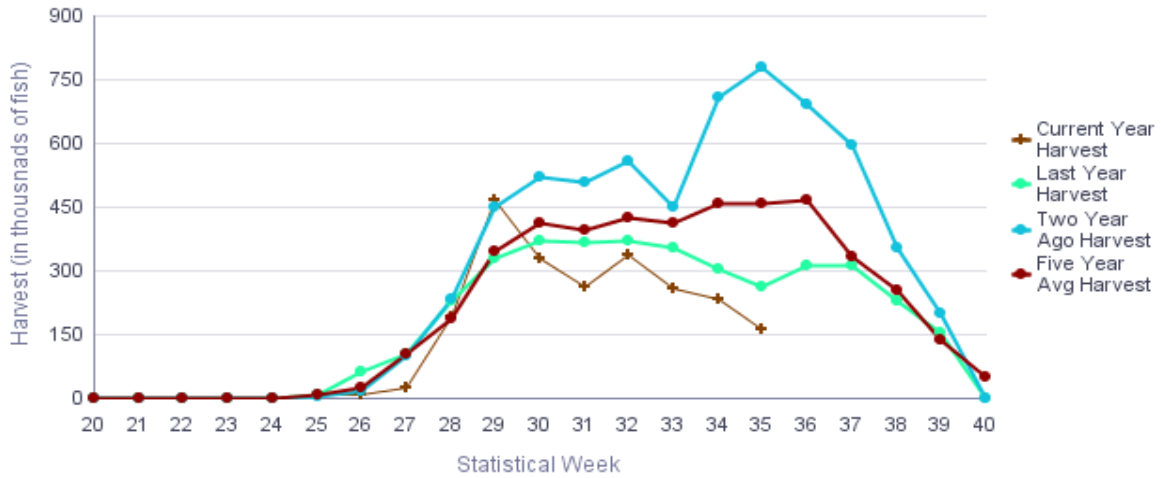


# Alaska Salmon Harvest Timing Graphs, Week 35, 27 August 16

### Alaska Chum Salmon Inseason Timing Chart



### Alaska Coho Salmon Inseason Timing Chart



### Alaska King Salmon Inseason Timing Chart

